



WESTSIDE LOVELAND ELEMENTARY

COMMUNITY MEETING NO. 1

March 25, 2025



- Introduction (10 min)
- Background Info (10 min)
[Scope, Ed Spec & Engagement Plan, Survey]
- Activity (30 min)
- Group Presentations & Final Thoughts (~30 min)

- Building Tour
[Optional tour of Loveland]



PROJECT ADVOCATES
Your Project. Our Passion.

BVH ARCHITECTURE

pen
ARCHITECT LLC

DESIGN TEAM

slido

Join at
slido.com
#7257 891



Question:

What are you looking forward to at the new Loveland Elementary?



What are you looking forward to at the new Loveland Elementary?

Join at
slido.com
#7257 891



Westside Community Schools: Guiding Design Principles

Create a building that **PRESERVES THE CULTURE OF ITS COMMUNITY**.

Design a **LEARNER-CENTERED BUILDING** that allows for showcasing and sharing of student work.

Create an environment that builds a **SENSE OF COMMUNITY** through purposeful utilization of space.

Design a **FLEXIBLE FACILITY**, able to adapt and allow for innovative change, as well as the integration of existing and new technologies, over the next 50 years.

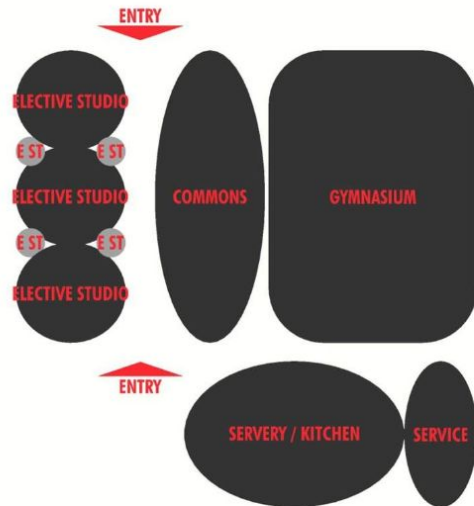
Design a facility with the understanding that the **EDUCATIONAL ENVIRONMENT EXTENDS BEYOND THE BUILDING**, to the site, and into the community.

Develop a building that will **EMBRACE COLLABORATIVE AND PERSONALIZED LEARNING**.

Design a **SAFE AND SECURE** facility for students and staff.

Westside Community Schools: EdSpec

EXISTING: 34,524 GSF
NEW LOVELAND: 51,080 GSF



1-6 CLASSROOM STUDIO

SQUARE FOOTAGE

+/- 10% of 820 SF

NUMBER OF OCCUPANTS

20-25

ACTIVITIES AND USE

The space must be flexible to allow for differentiate instructional methods used by instructors, staff and volunteers. Lectures/presentations, discussion, individual and small group work, testing, research, study skills, general coursework, blended learning

ACCESS & ADJACENCY

ADJACENT visual access from at least one adjacent space, acoustic separation
NEARBY small group room, learning commons, resource, media center
DISTANCE

INTERIOR FINISH

FLOOR FINISH carpet tile and resilient flooring in front of sinks and as required
CEILING HEIGHT & FINISH 9'-0" minimum; 2'x2' acoustical ceiling panels
WALL FINISH paint with an accent wall

TECHNOLOGY & COMMUNICATION

VOICE telephone, intercom
DATA wireless connectivity, data connections, laptop cart
AUDIO VISUAL Flat screen TV, ceiling sound reinforcement, Apple TV, interactive control system
CLOCK BELL atomic clock and bell system
OTHER zoned lighting, security access and monitoring

INSTRUCTIONAL AIDS & DISPLAY

MARKER BOARDS (2) 4'x8' marker boards
TACK SURFACE 4'x8' tack board or tack wall
FIXED EQUIPMENT approximately 16' of casework, tall storage unit with wardrobe, base and uppercabinets. Operable wall between Studios is optional

FFE

movable flexible collaborative furniture, task chair, desk, movable podium



Loveland Community Engagement Process:



LISTEN

- + **Meet People Where They Are At.**
- + Local Community Outreach
- + Ensure all Stakeholders are Heard

VALIDATE

- + **Ensure District Priorities**
- + DAC Validation Workshop
- + Create Aspirational Goals
 - o Prioritize Goals
 - o Ensure Scope & Budget
 - o Ensure Student Success

INFORM

- + **Educate + Involve Community**
- + Maintain Goals through the Design Process
- + Communicate to the Board & Community

Survey

YOUR VOICE MATTERS!

Please take a few moments to complete our online survey and help shape the new Loveland Elementary School.

Thank you for being a valued part of the Westside Community. We look forward to hearing from you!

WESTSIDE COMMUNITY SCHOOLS • PROJECT ADVOCATES • BVH ARCHITECTURE • PEN ARCHITECT



SCAN THE QR CODE
BELOW TO TAKE OUR
QUICK ONLINE SURVEY



02

Activity





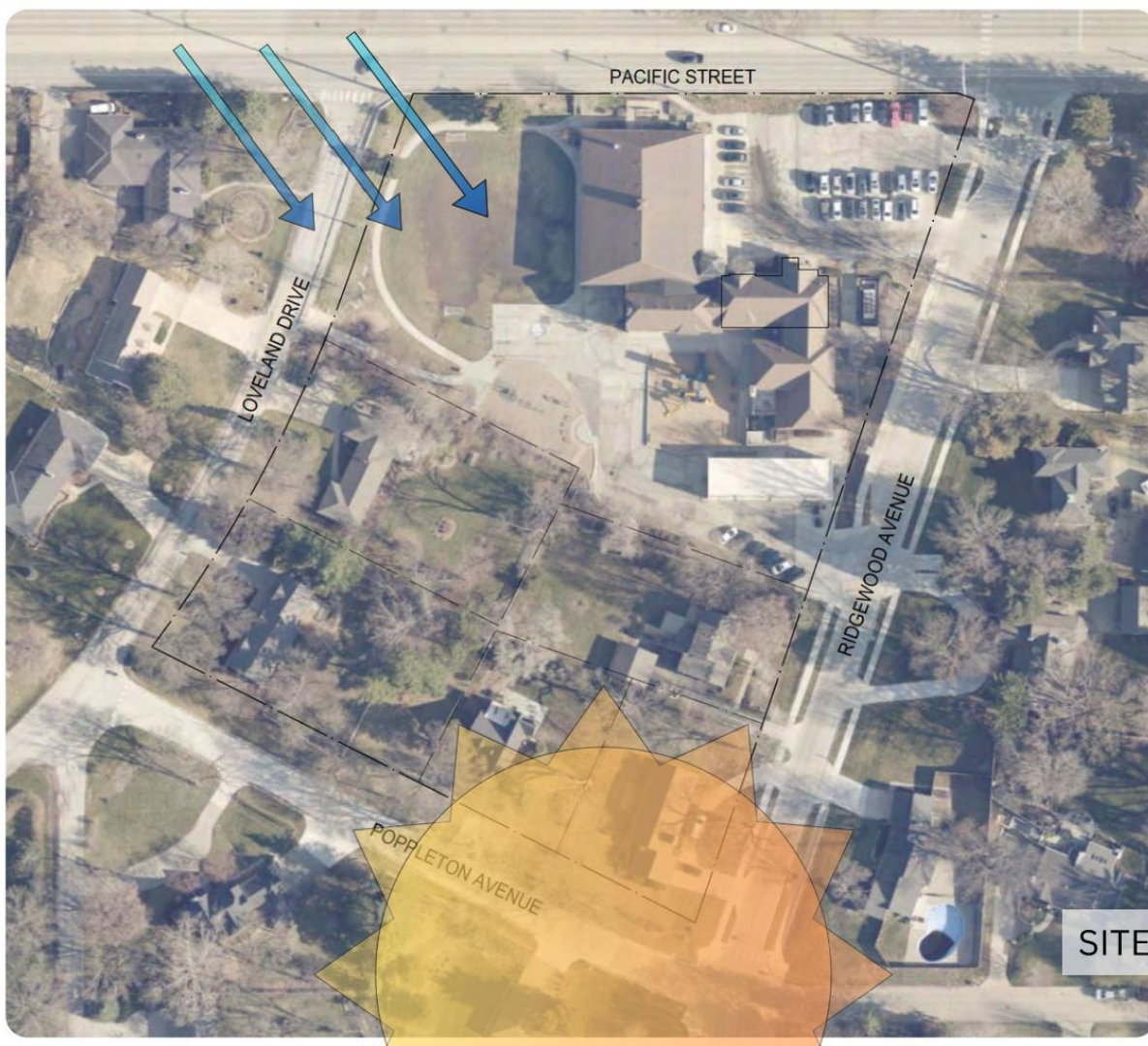
1941 SITE HISTORY



SITE HISTORY



SITE HISTORY



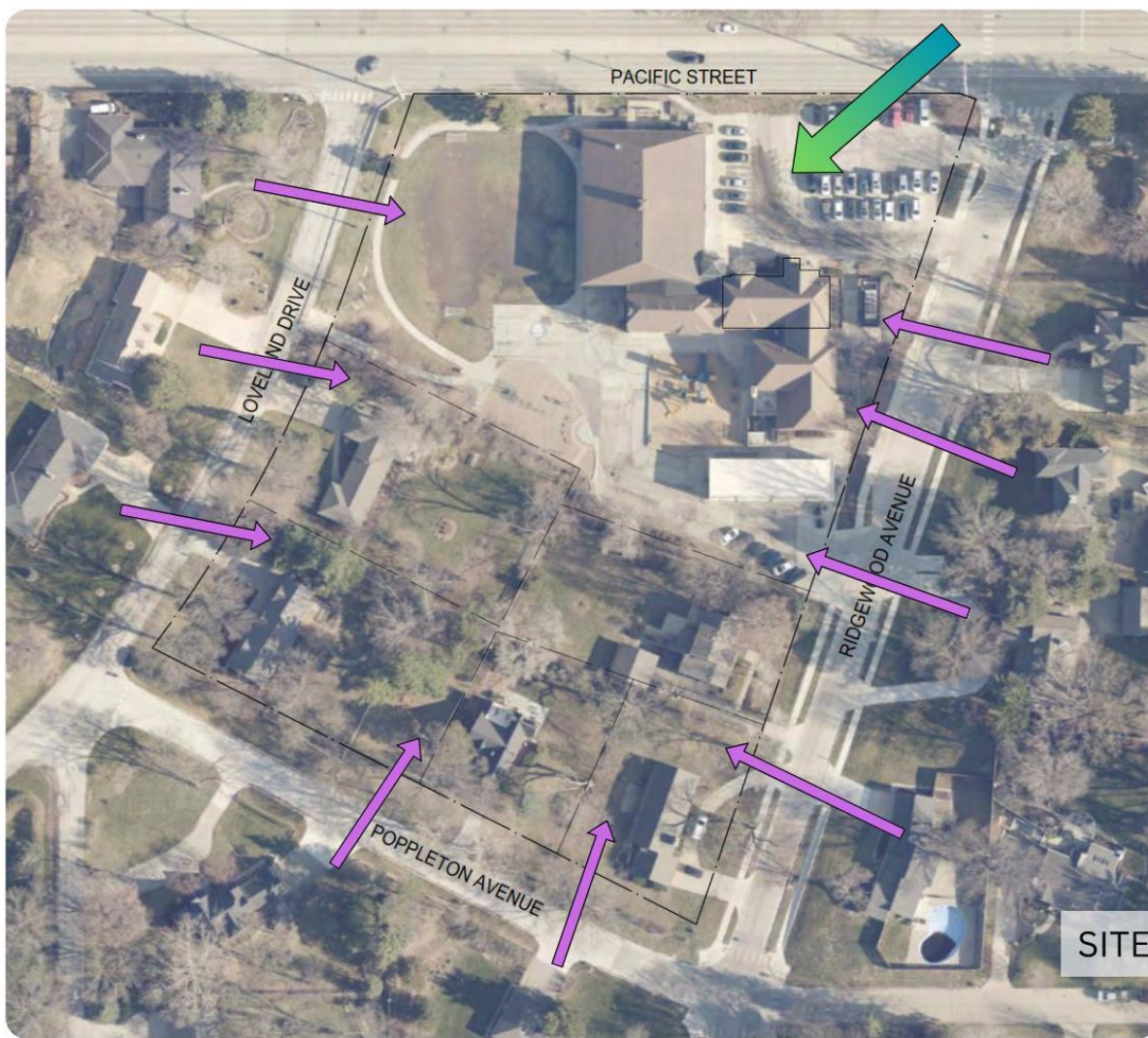
PACIFIC STREET

LOVELAND DRIVE

RIDGEWOOD AVENUE

POPPLETON AVENUE

SITE CLIMATE



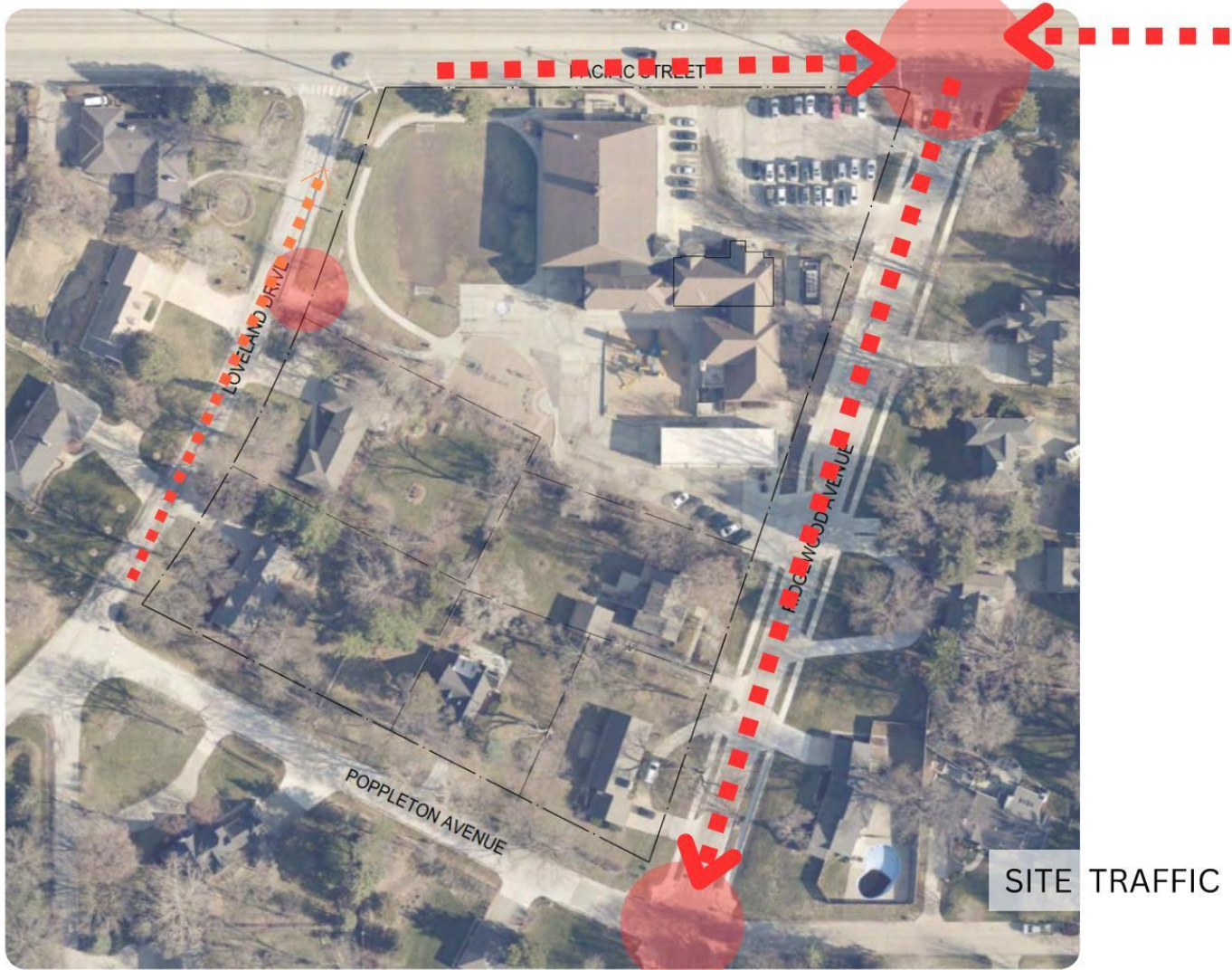
PACIFIC STREET

LOVELAND DRIVE

POPPLETON AVENUE

RIDGEWOOD AVENUE

SITE VIEWS



SITE TRAFFIC



SITE NOISE



PEDESTRIAN PATHS

DOTS & BLOCKS WORKSHOP

- **DOTS** - **green & red dot = pros & cons** on existing site
 - use sticky notes for additional description of challenges or opportunities
- **BLOCKS** place program blocks on the site plan in your optimal location, i.e. **Gym, Classroom, Commons, Music, Office, and Playground.**

03

THANK YOU!